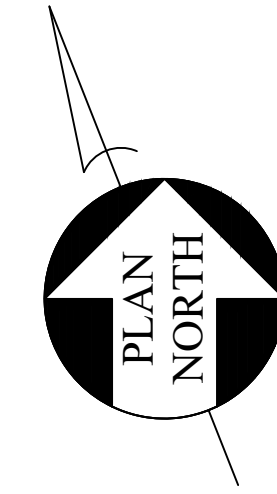


SCC - TYGER RIVER BMW BUILDING REROOFING PROJECT

210 COMMERCE CT., DUNCAN, SC 29334

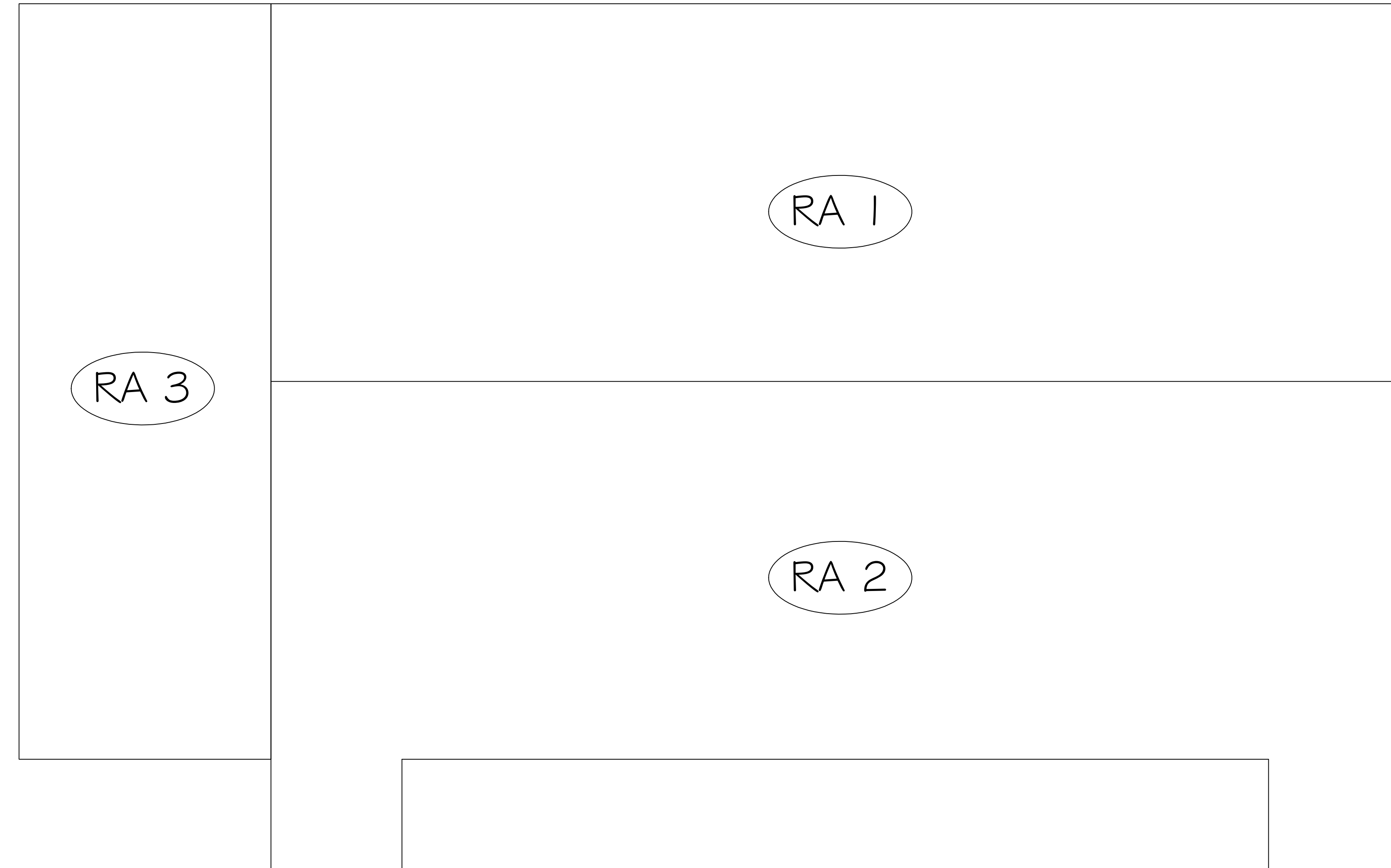


Shepard & Associates, LLC

3547 Dreher Shoals Road, Suite 6
Irmo, South Carolina 29063
Phone: (803) 407-8284
Fax: (803) 407-8206

PROJECT DATA

- A. PROJECT DESIGNED IN ACCORDANCE WITH:**
1. INTERNATIONAL BUILDING CODE - 2021 EDITION
 2. INTERNATIONAL PLUMBING CODE - 2021 EDITION
 3. INTERNATIONAL FIRE CODE - 2021 EDITION
 4. INTERNATIONAL EXISTING BUILDING CODE - 2021 EDITION
 5. INTERNATIONAL ENERGY CONSERVATION CODE - 2009 EDITION
 6. NATIONAL FIRE PROTECTION ASSOCIATION 10 - 2021 EDITION
- B. BASIC REVIEW INFORMATION**
1. EXISTING BUILDING IS A 1-STORY REINFORCED CONCRETE MASONRY UNIT (CMU) NON-LOAD BEARING WALL CONSTRUCTION WITH STEEL COLUMNS AND BEAMS SUPPORTING ROOF LOAD. STEEL "Z"-PURLINS SPAN APPROXIMATELY 25' BETWEEN BEAMS AND ARE SPACED APPROXIMATELY 5' O.C. VINYL BACKED BATT INSULATION IS DRAPED ACROSS PURLINS WITH A METAL TRAPEZOIDAL PANEL ROOF ATTACHED WITH EXPOSED FASTENERS.
 2. AREA OF AFFECTED ROOF (ACTUAL AREA): 42,543 SF
 - a. ROOF AREA 1: 16,950 SF
 - b. ROOF AREA 2: 18,093 SF
 - c. ROOF AREA 3: 7,500 SF
 3. EAVE HEIGHT ABOVE GRADE:
 - a. ROOF AREA 1: 24'
 - b. ROOF AREA 2: 24'
 - c. ROOF AREA 3: 18'
 4. PRIMARY OCCUPANCY CLASS: GROUP "B" BUSINESS
 5. CLASS "A" ROOF COVERING
- C. PROJECT IN FIRE DISTRICT: YES**
- D. STRUCTURAL INFORMATION:**
1. RAs 1, 2 & 3 DESIGN LOADS:
 - a. ORIGINAL DEAD LOAD INCLUDED METAL TRAPEZOIDAL PANEL & 3" VINYL BACKED BATT INSULATION
ESTIMATED WEIGHT: 1.5lbs/SF
 - b. PROPOSED DEAD LOAD INCLUDING SINGLE PLY ROOF MEMBRANE & RIGID INSULATION ATTACHED THROUGH THE EXISTING TRAPEZOIDAL TO "Z" PURLINS
DESIGN WEIGHT: 3lbs/SF
 - c. NET DEAD LOAD INCREASE OF 1.5lbs/SF



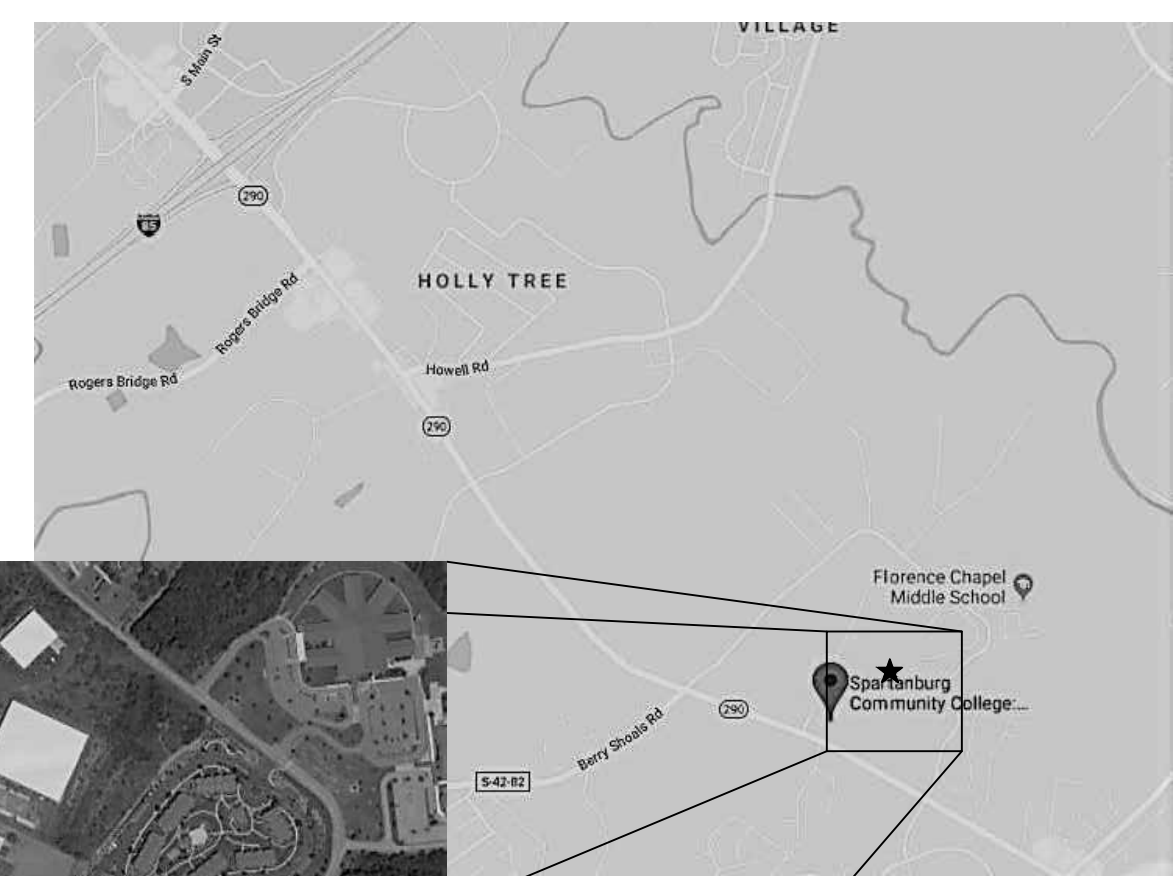
1 KEY PLAN

LEGEND

- = AREAS IN CONTRACT
- = AREAS NOT IN CONTRACT
- = ROOF AREA DESIGNATIONS

DRAWING INDEX

- K1 TITLE SHEET, SITE VICINITY MAP, KEY PLAN, & DRAWING INDEX
- R1 ROOF PLAN
- D1 DETAILS
- D2 DETAILS
- D3 DETAILS



2 SITE VICINITY MAP

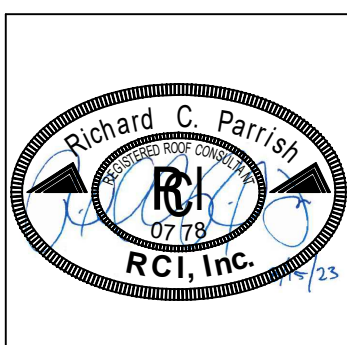
SHEET TITLE:

Key Plan

PROJECT DESCRIPTION: State Project No. H59-6196-PD-B
SCC - TYGER RIVER BMW BUILDING REROOFING PROJECT
CLIENT NAME: SPARTANBURG COMMUNITY COLLEGE

REVISIONS

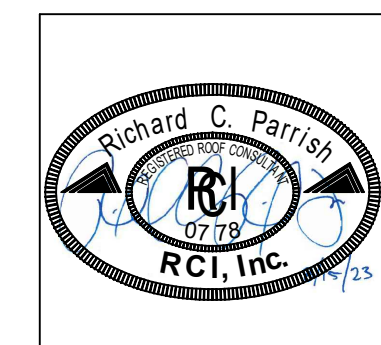
REVISION	DATE	APPROVED



PF No. 15004.015.004
DATE: 8/15/2023
SCALE: NTS
DRAWN BY: RCP
CHECKED BY: JAW

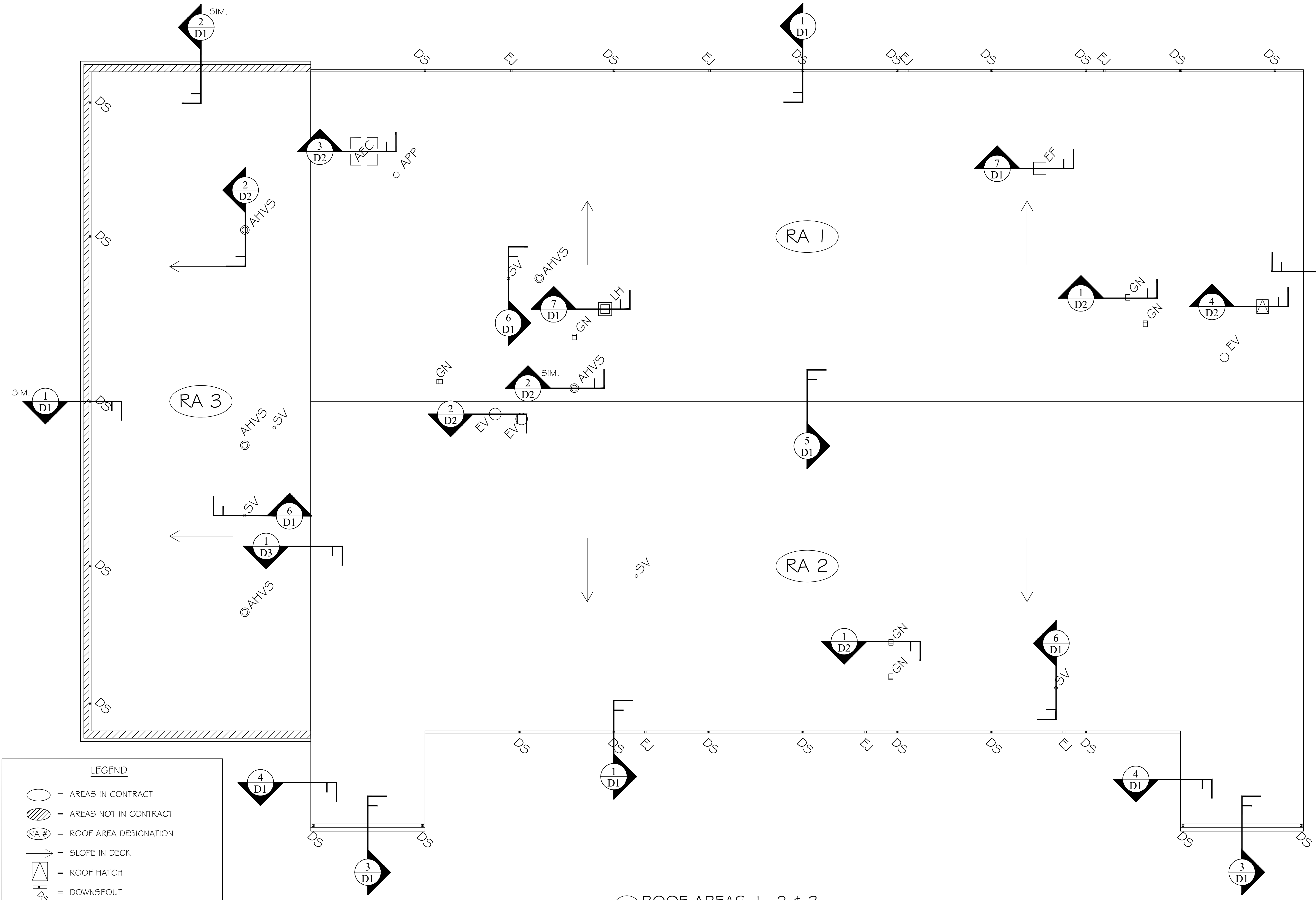
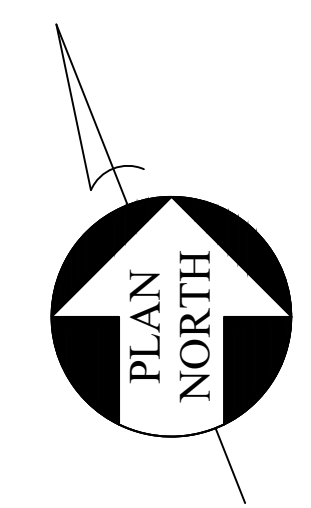
SHEET
K1

REVISIONS	REVISION	DATE	APPROVED



PF No. 15004.015.004
 DATE: 8/15/2023
 SCALE: NTS
 DRAWN BY: RCP
 CHECKED BY: JAW

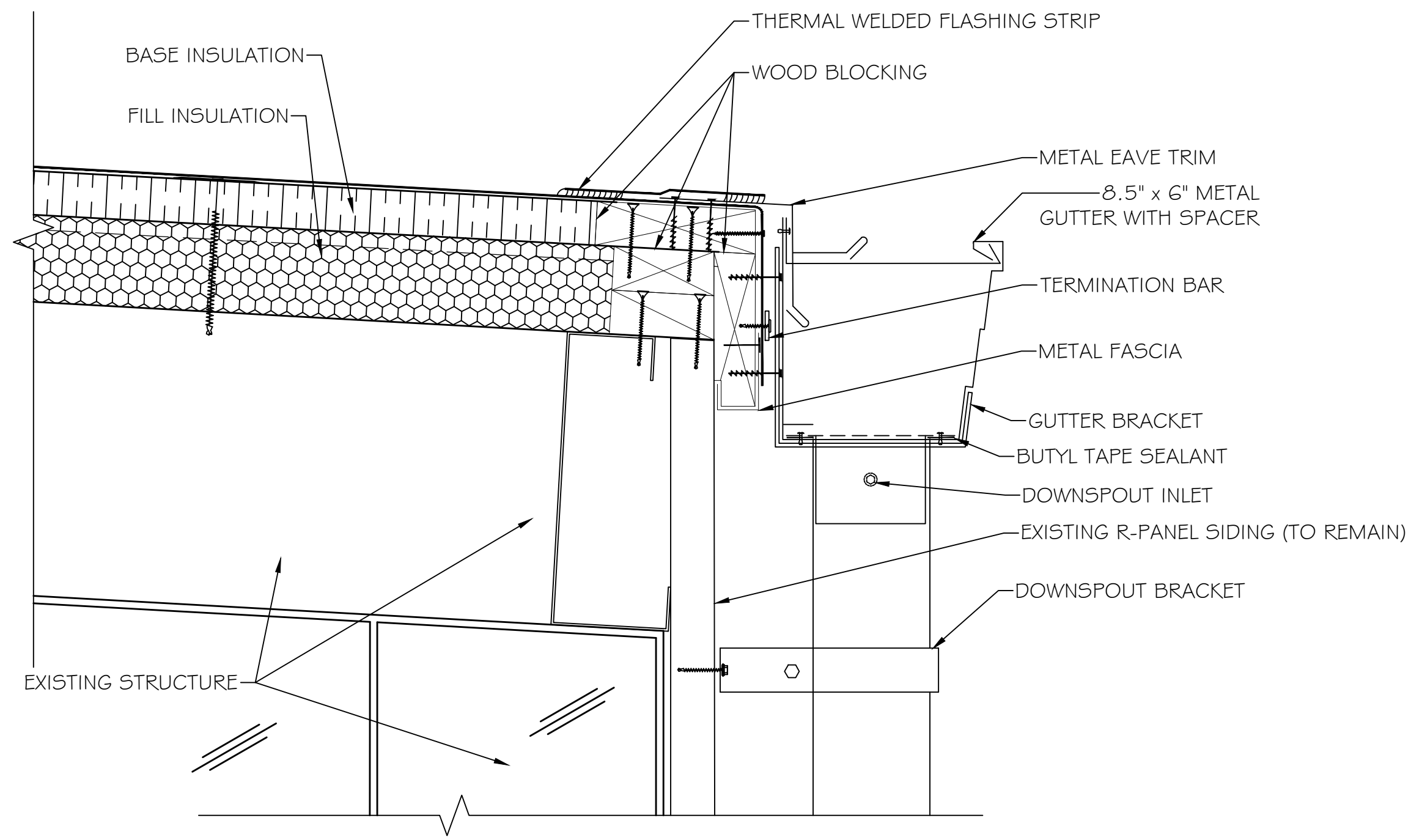
SHEET
R1



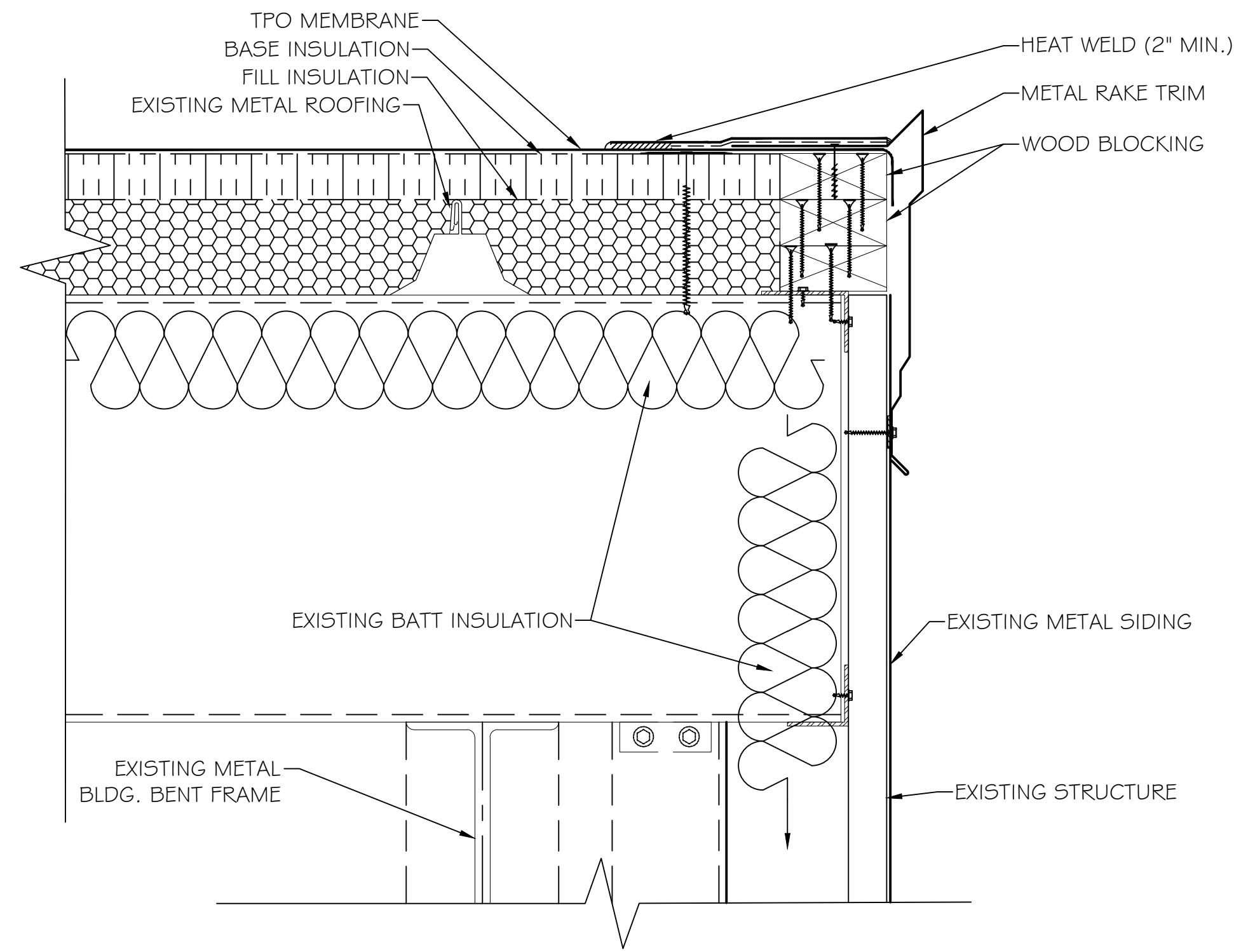
1 ROOF AREAS 1, 2 & 3

LEGEND

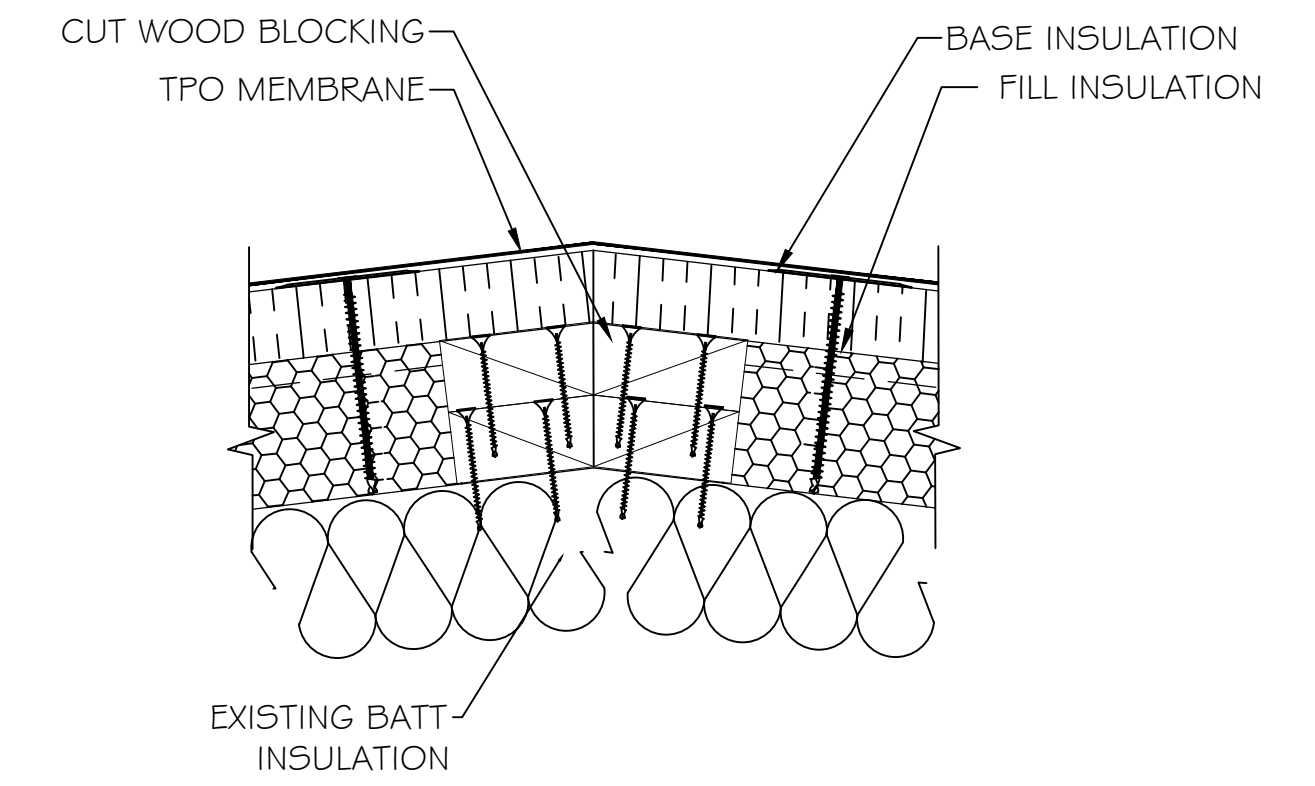
- = AREAS IN CONTRACT
- ▨ = AREAS NOT IN CONTRACT
- RA # = ROOF AREA DESIGNATION
- = SLOPE IN DECK
- ▧ = ROOF HATCH
- ⊥ = DOWNSPOUT
- ⊥ GN = GOOSE NECK VENT
- ⊥ LH = LOUVRE HOUSING
- ⊥ O = EXHAUST VENT
- ⊙ AHVS = HOT VENT STACK (TO BE REMOVED)
- ⊙ SV = SANITARY VENT
- ▭ ACJ = ABANDONED EQUIPMENT CURB
- APP = ABANDONED PIPE PENETRATION
- EF = NEW EXHAUST FAN



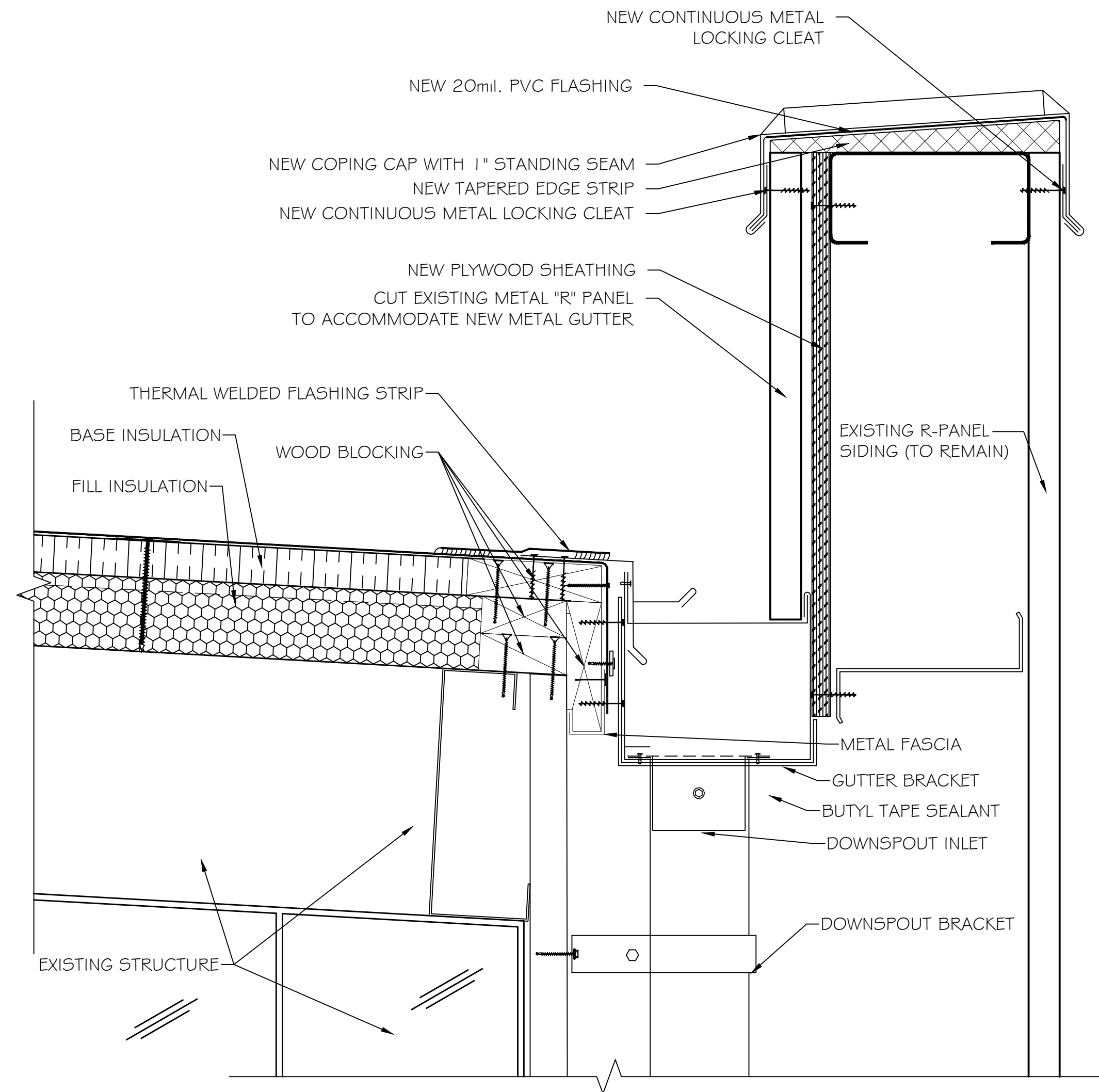
1 EAVE WITH GUTTER



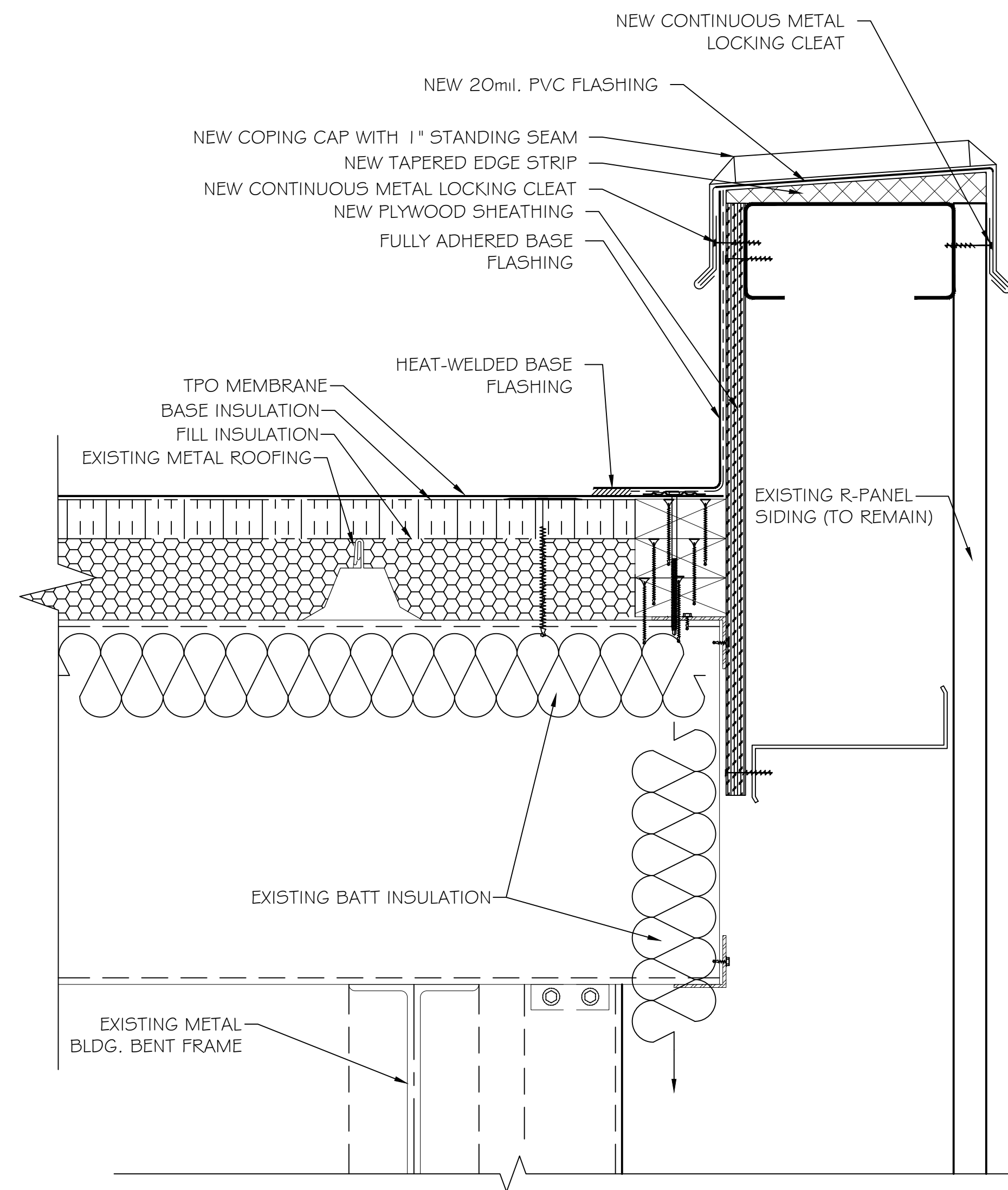
2 TYPICAL RAKE FLASHING



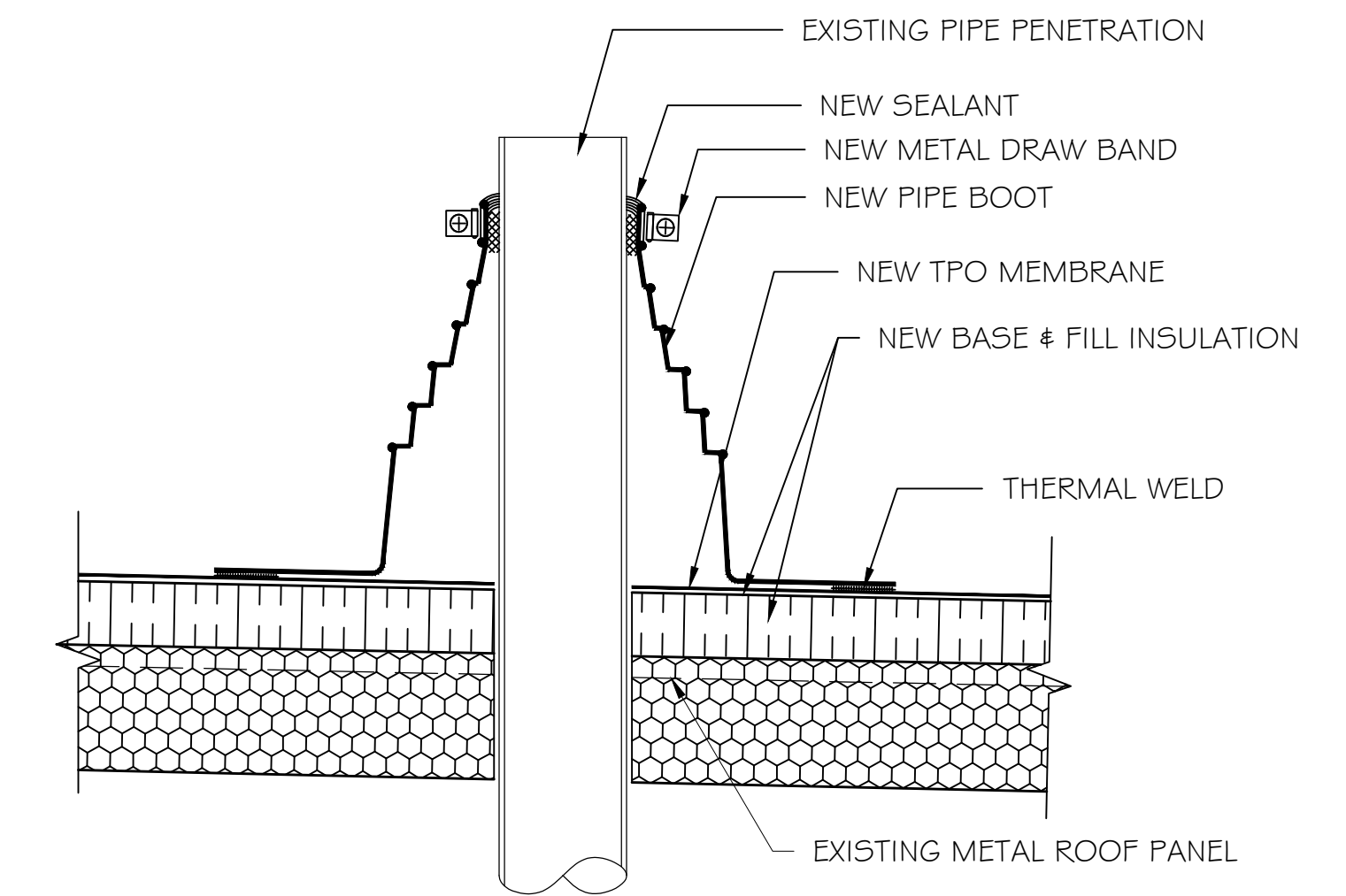
5 TYPICAL RIDGE



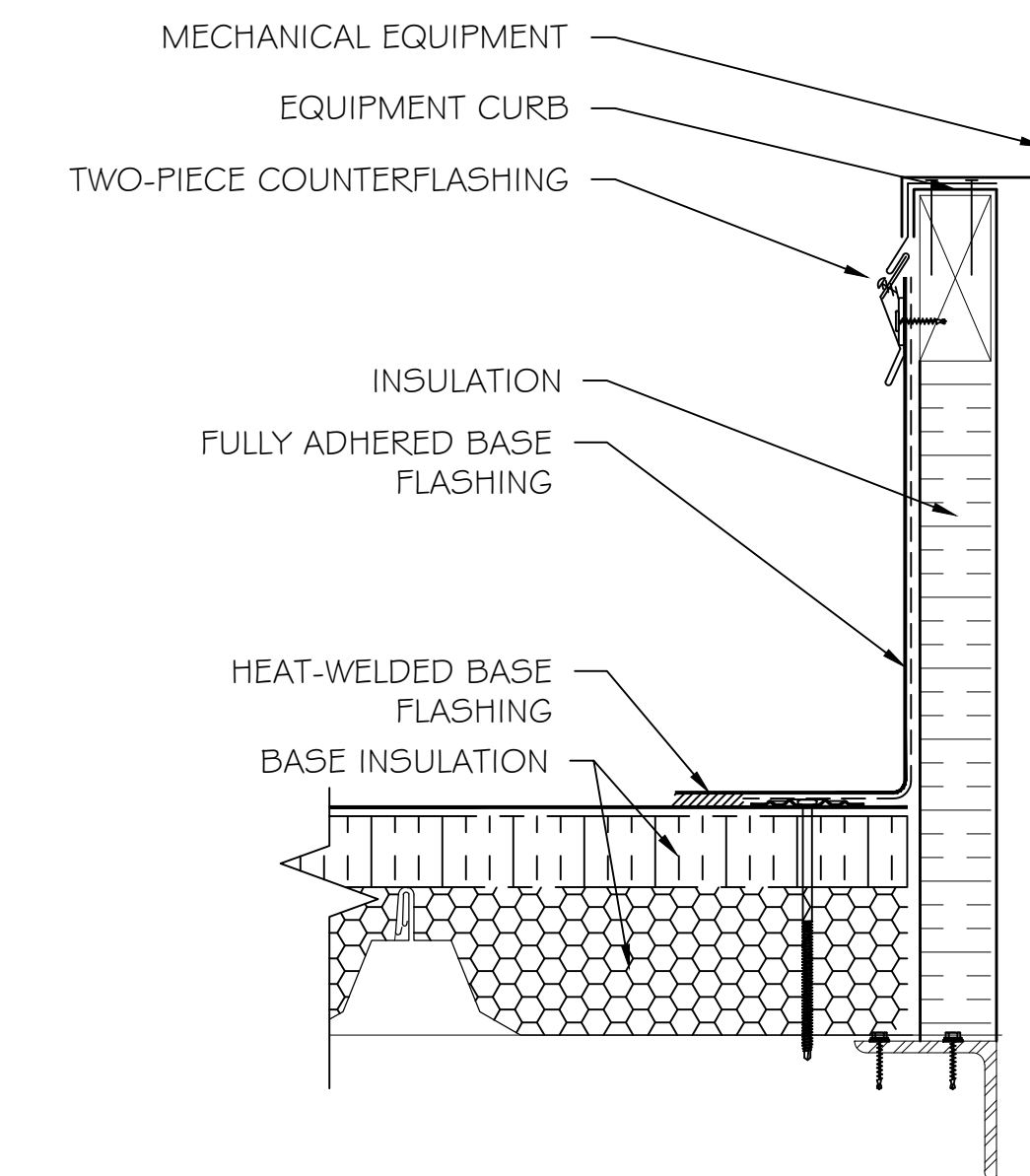
3 INTERNAL GUTTER AT PARAPET



4 RAKE FLASHING AT PARAPET

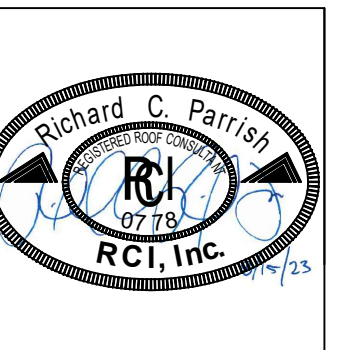


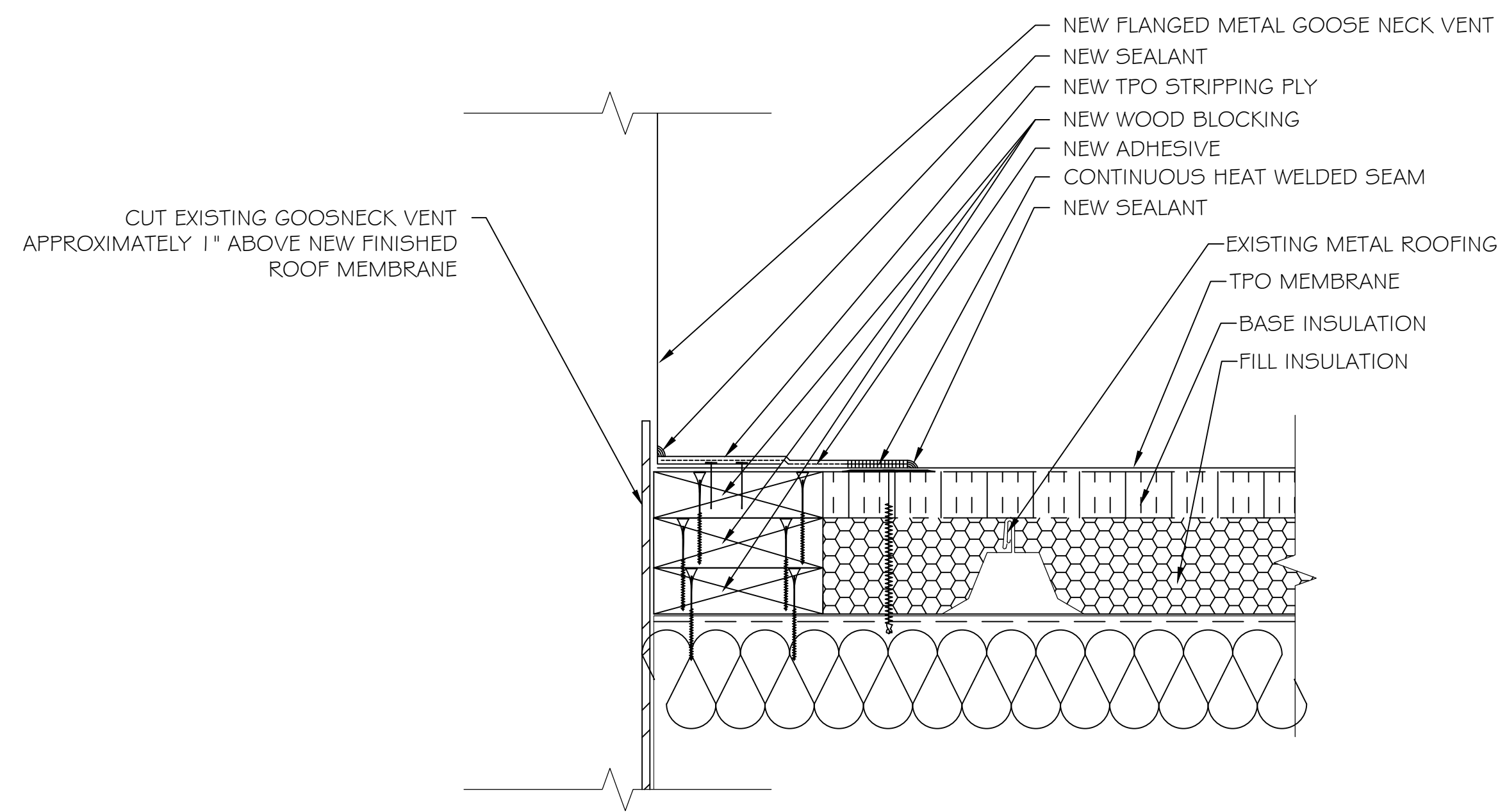
6 TYPICAL PIPE PENETRATION



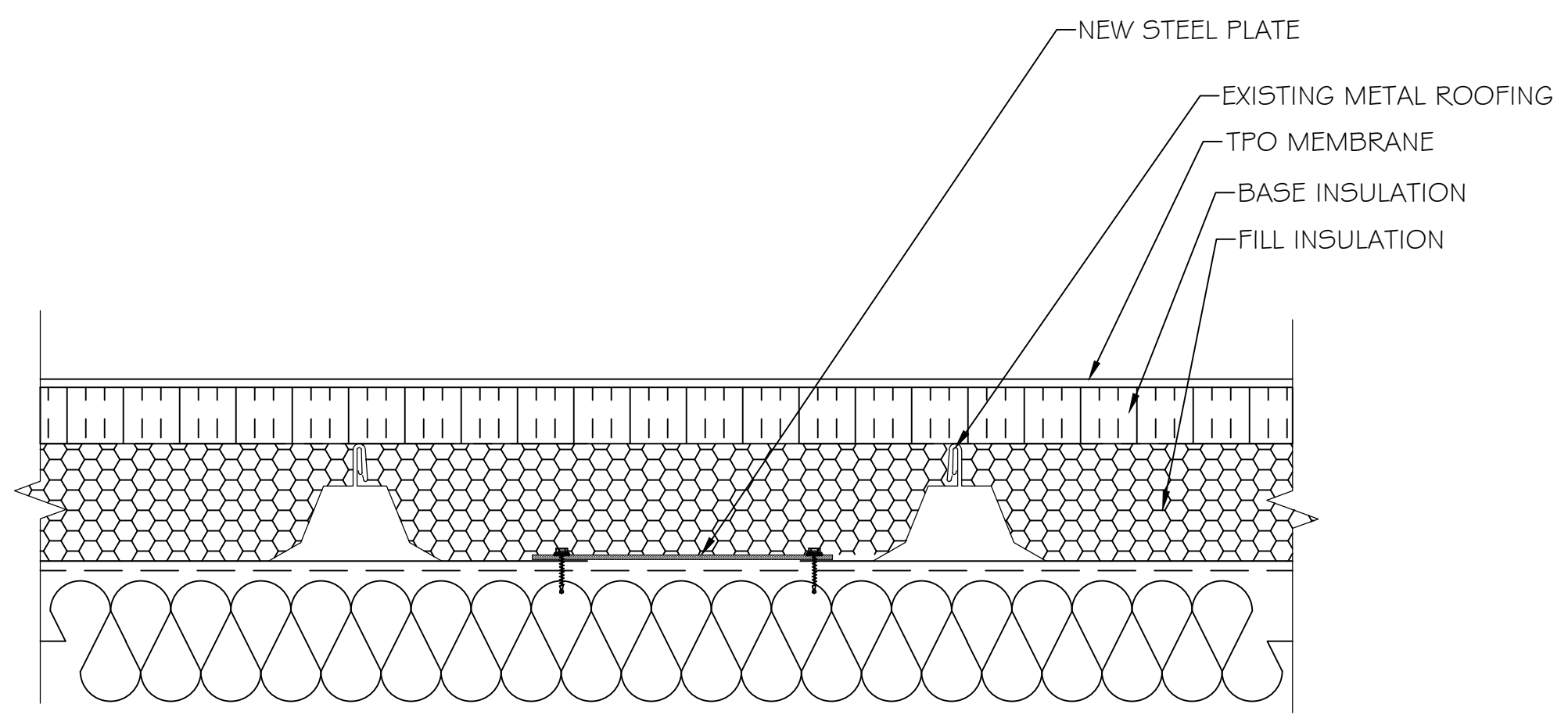
7 EQUIPMENT CURB DETAIL

REVISION	DATE	APPROVED

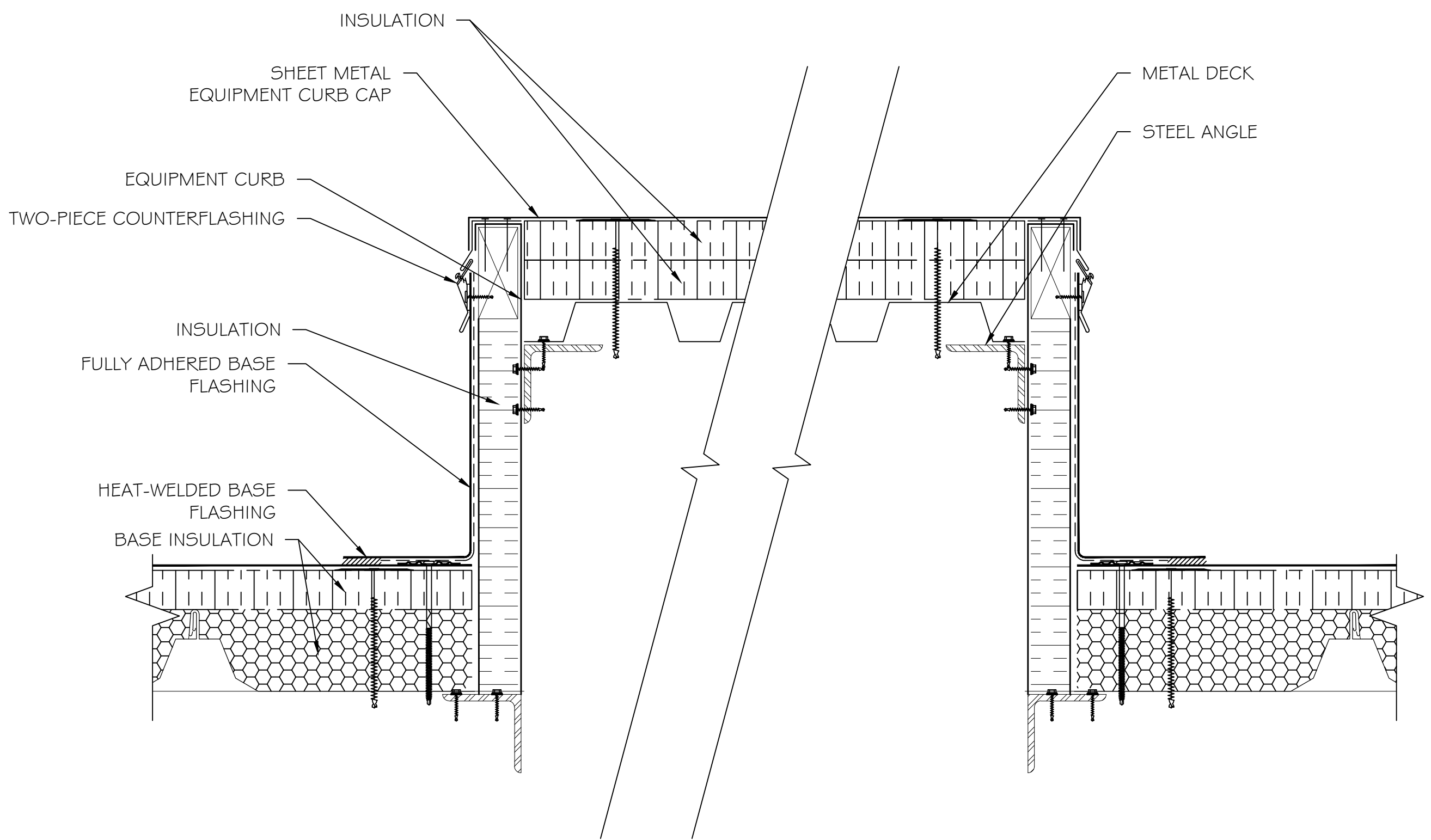




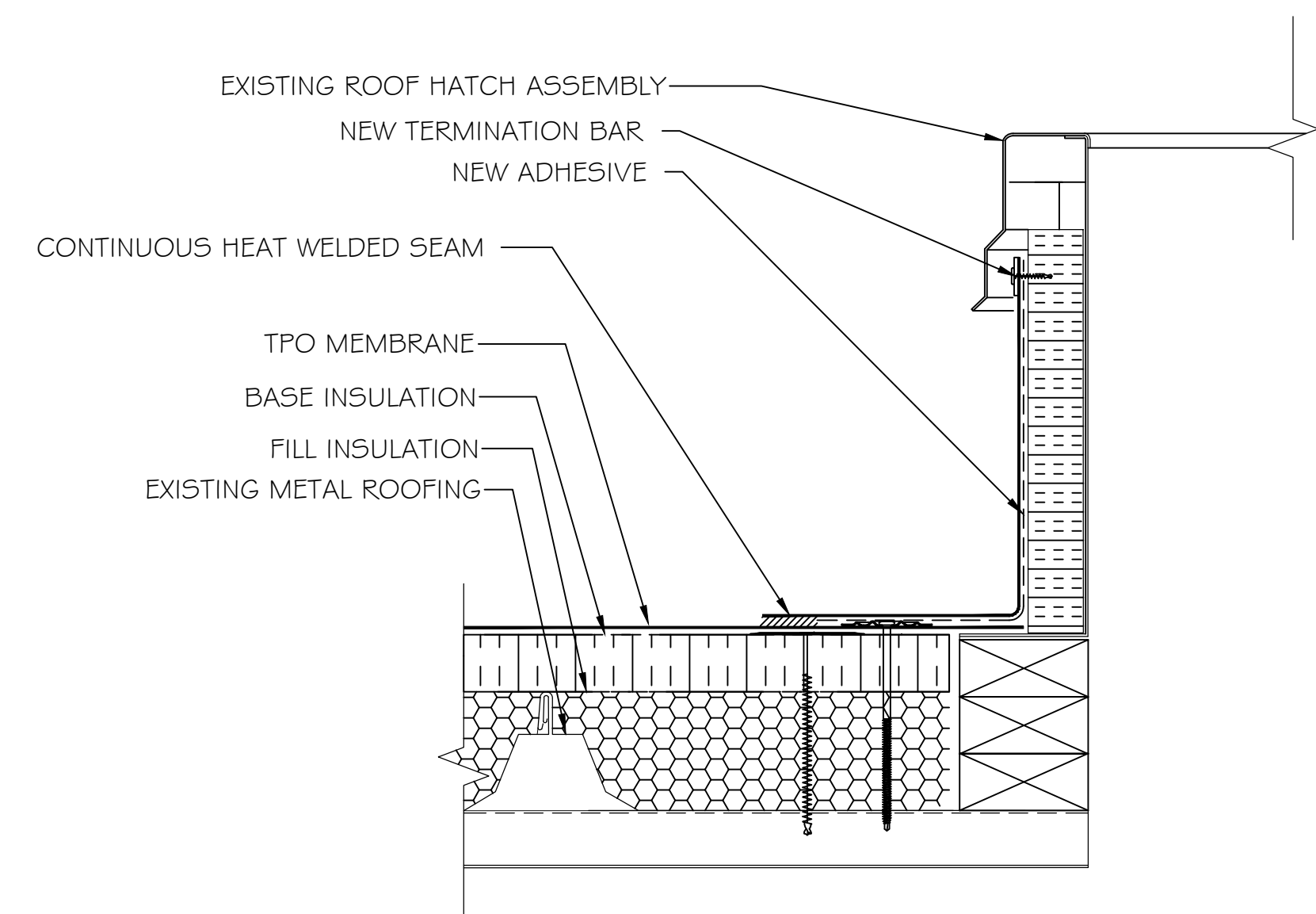
1 GOOSENECK VENT DETAIL



2 ABANDONED HOT VENT STACK DETAIL

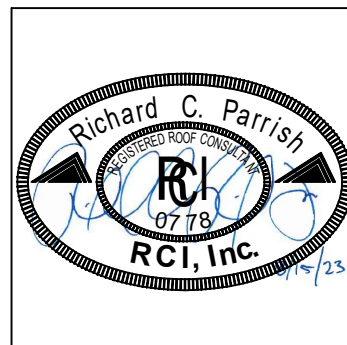


3 ABANDONED CURB CAP DETAIL

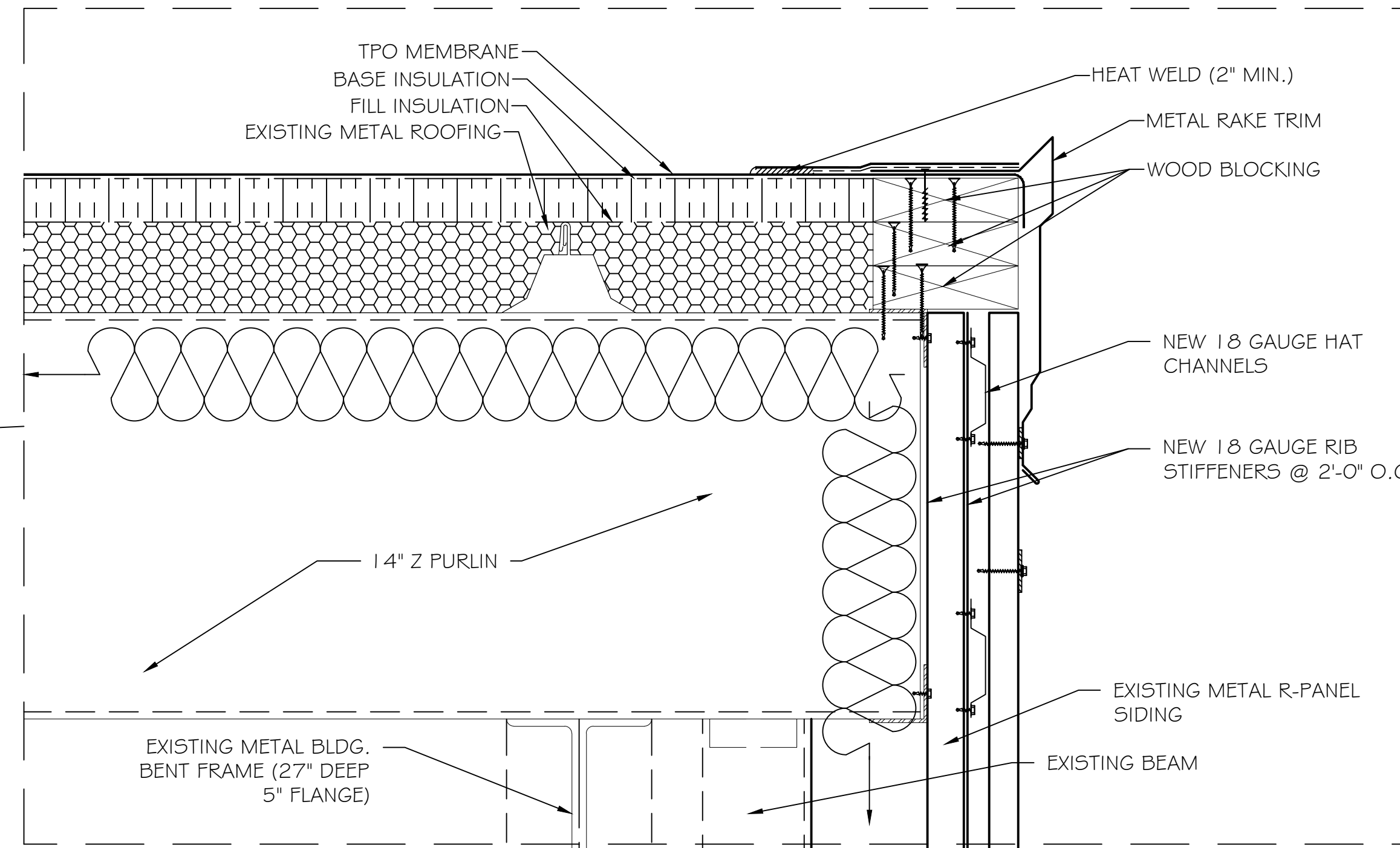
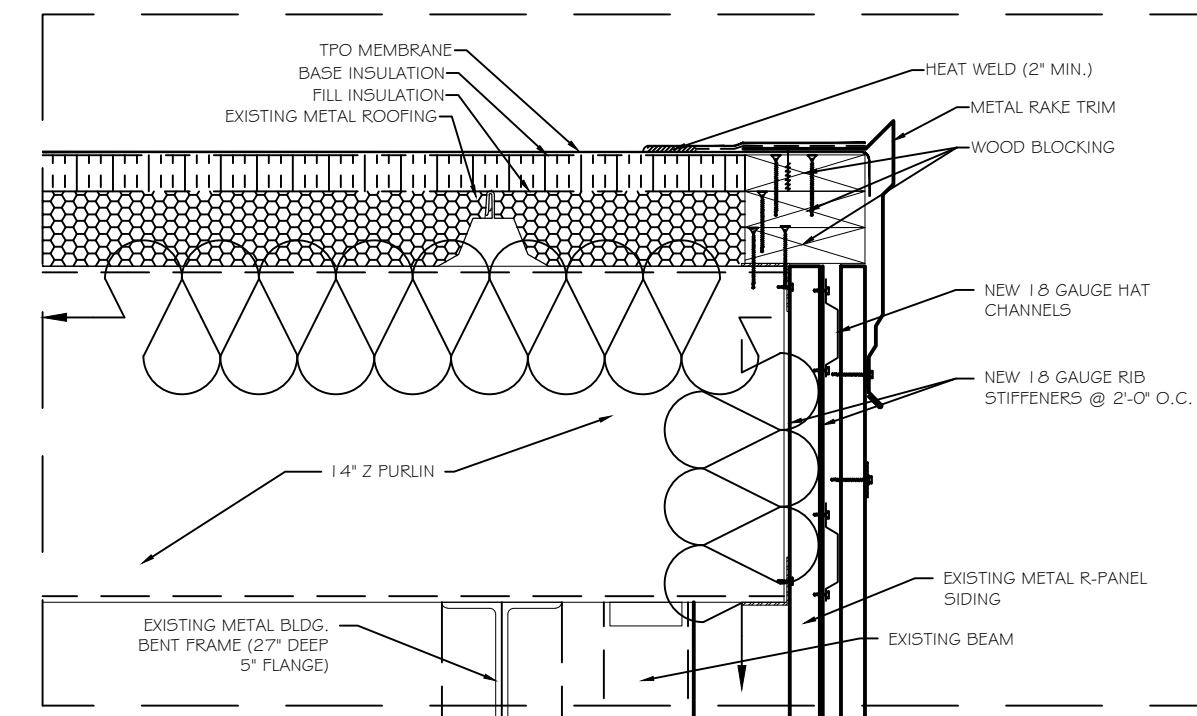


4 ROOF HATCH DETAIL

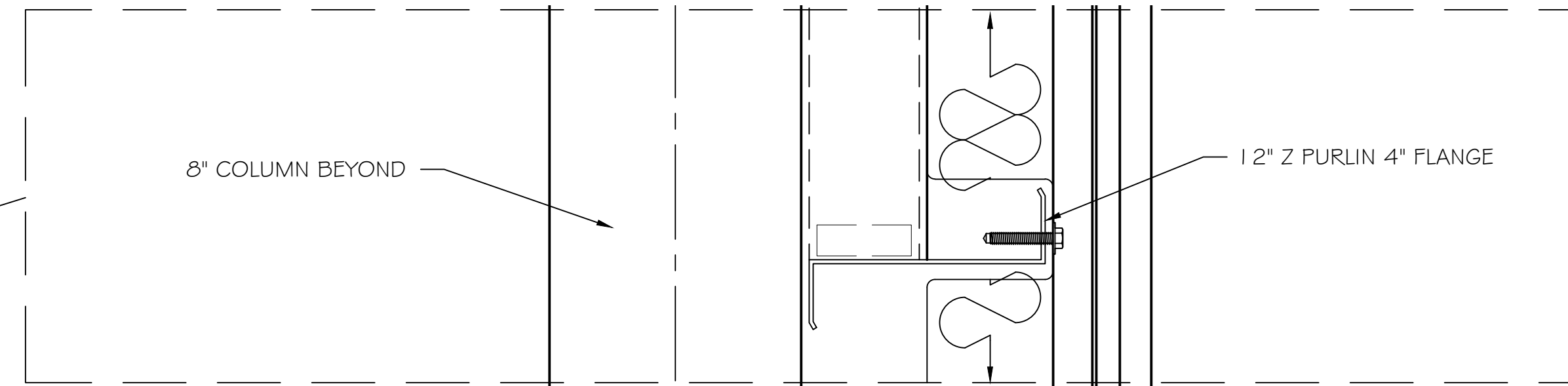
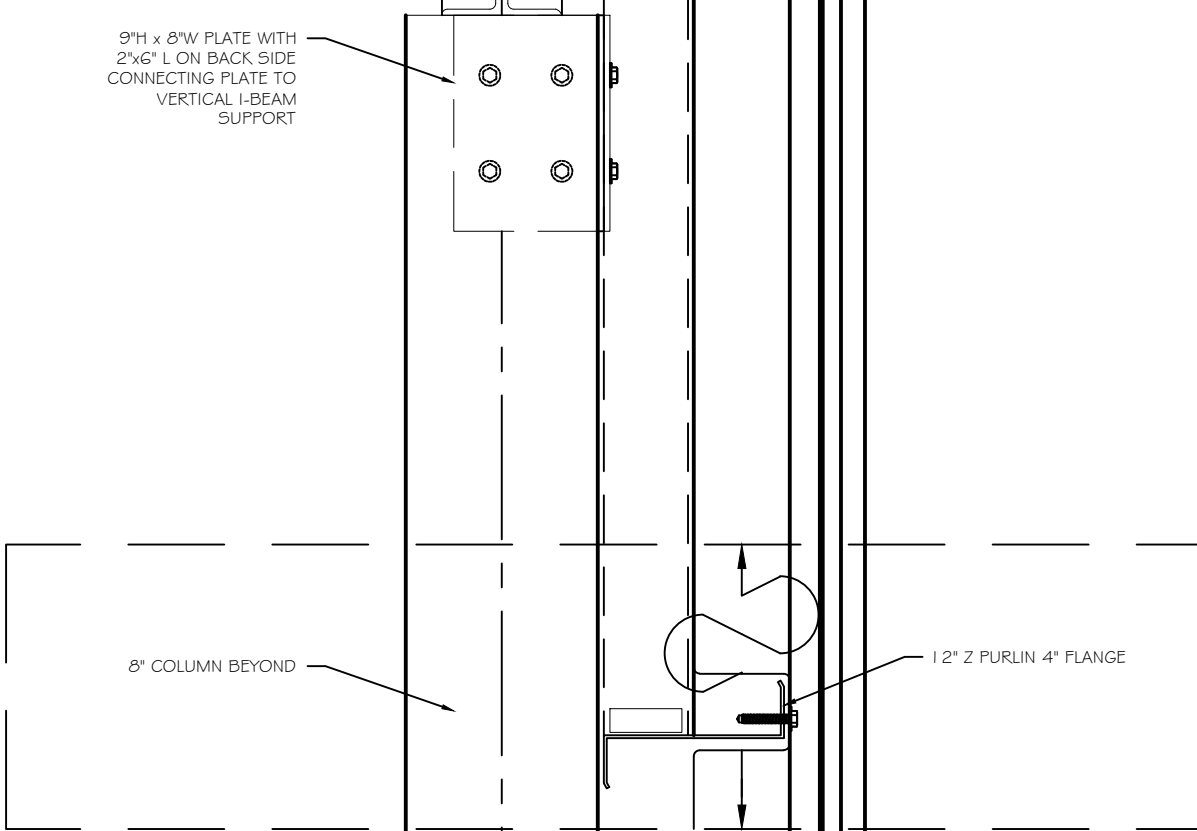
REVISIONS	REVISION	DATE	APPROVED



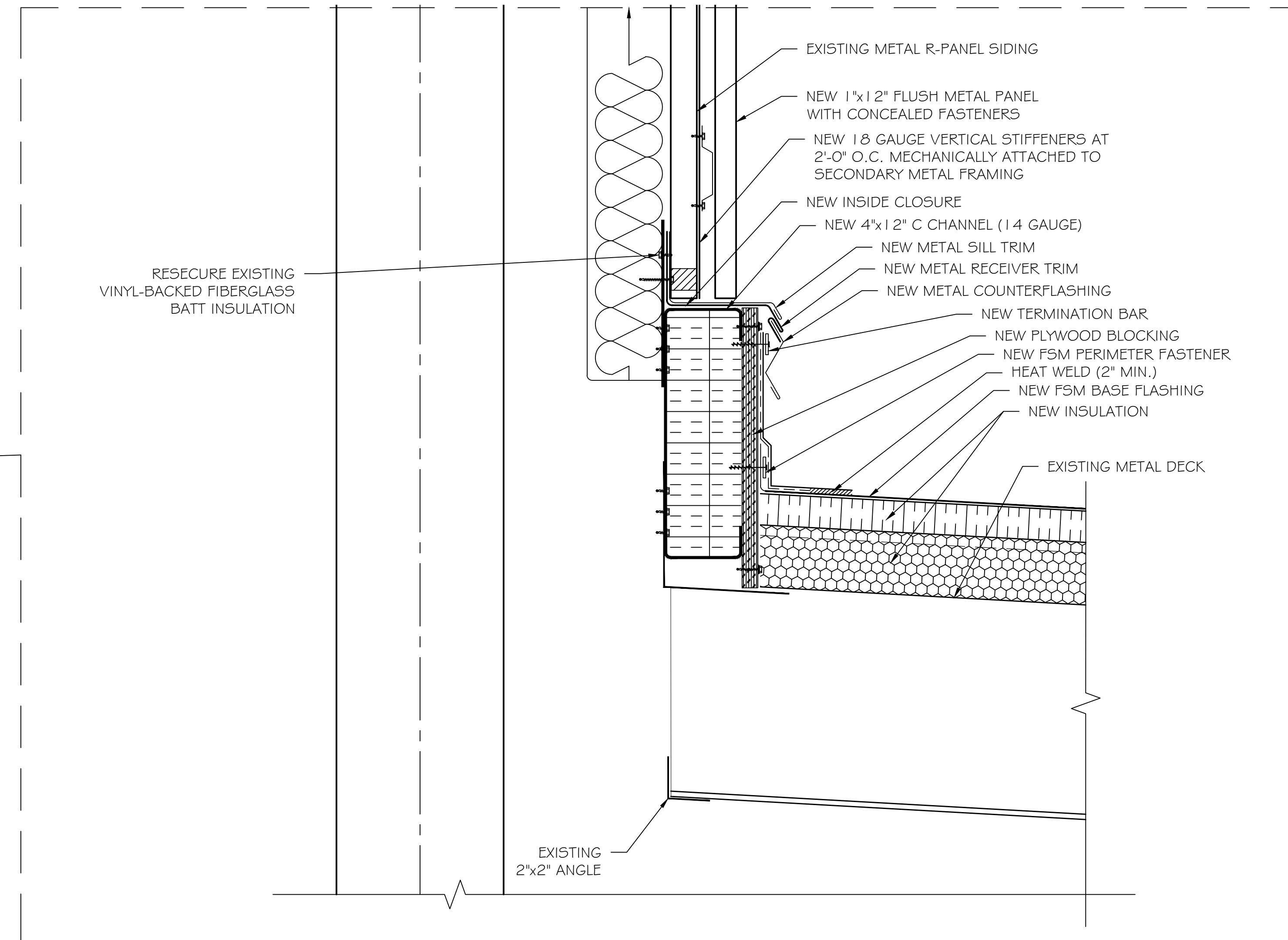
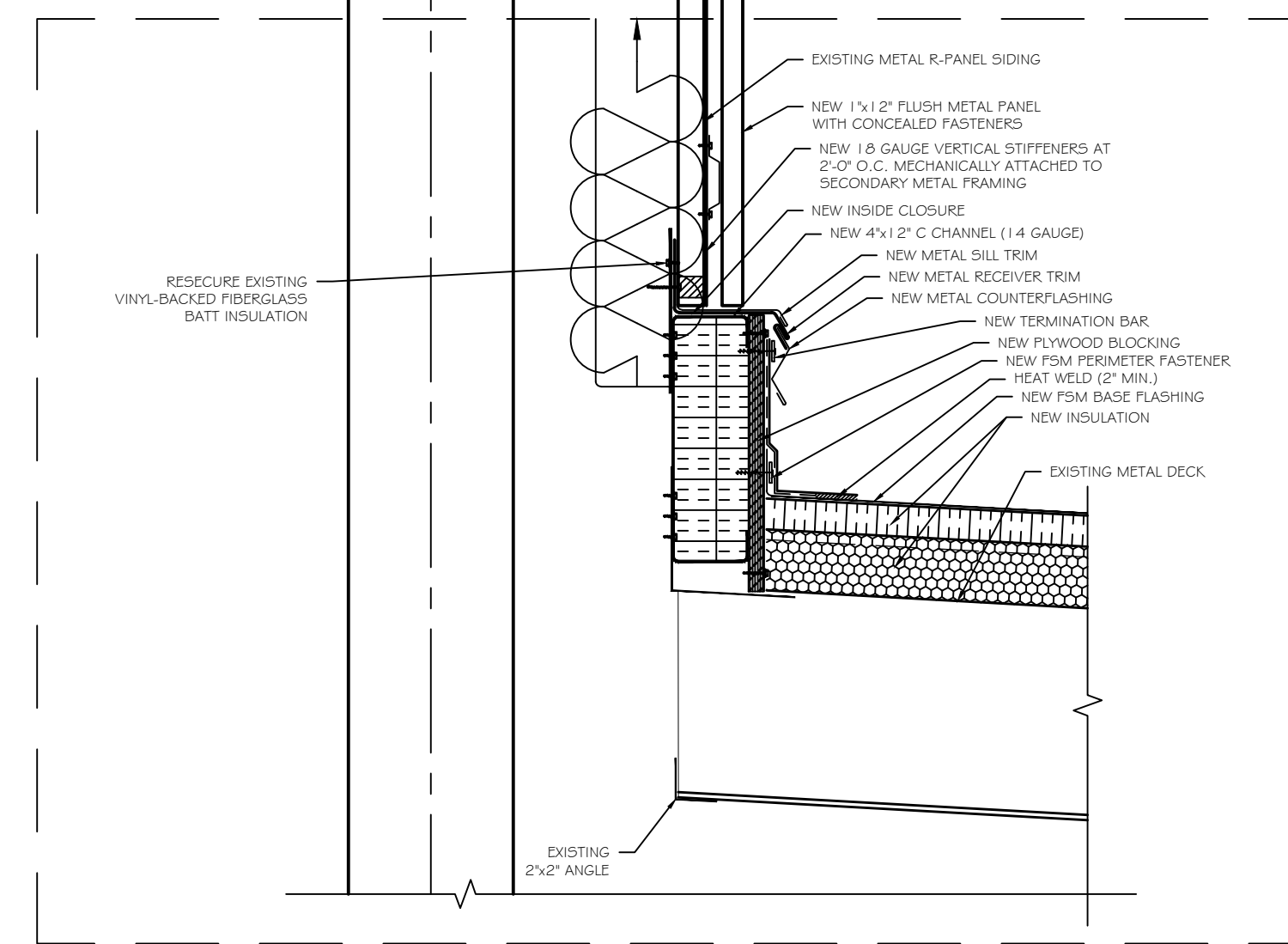
PF No. 15004.015.004
 DATE: 8/15/2023
 SCALE: NTS
 DRAWN BY: RCP
 CHECKED BY: JAW



1a RAKE



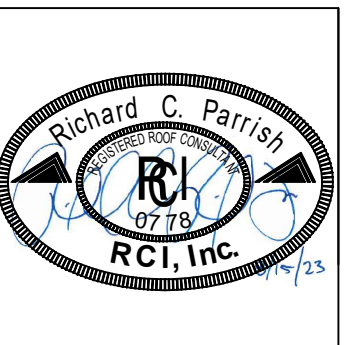
1b GIRT



1c FLASHING

1 NEW WALL SECTION

REVISIONS	DATE	APPROVED



PF No. 15004.015.004
 DATE: 8/15/2023
 SCALE: NTS
 DRAWN BY: RCP
 CHECKED BY: JAW